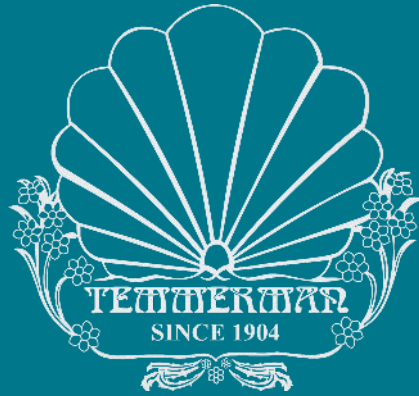




# TEAMERIDIAN

## Partner Opportunities

**Delightful Opportunities Await You!**



## **Join the Sweet Success of Temmerman Confiserie**

**Are you ready to embark on a sweet and prosperous journey?**

**Temmerman Confiserie, a renowned name in the world of candies and confections, welcomes you to explore an array of exciting partnership options. As a private label costumer, franchisee or ambassador partner, you can be a part of our sweet legacy.**

# TEMMERMAN PARTNER



## Who are we?

Established in 1904 in Ghent Belgium we have become the reference for high-quality candy, chocolate, biscuits and tea.

We uphold our family's time-honored production values, utilizing premium ingredients and offering artisanal-quality goods in eco-friendly packaging, all while remaining faithful to our traditions.



Now under the stewardship of the 5th generation, we're extending our reach beyond our borders.

We carefully select partners to establish a lasting global network for our sweet products.

**Always dreamed to have an old fashioned candy shop?**

**A high end chocolate or tea shop?**

**Just some great artisanal products in you're current shop?**

**A full experience sweet shop?**

# TEMMERMAN PARTNER



## Welcome to Temmerman's Partner Opportunity

At Temmerman, we have a legacy steeped in tradition and quality. Our family history forms the bedrock of our brand, a legacy we are proud to continue. Yet, we also embrace innovation, breathing new life into our traditions to create endless opportunities.

If you share our vision of preserving timeless values while embracing a modern, dynamic approach, you may be cut from the right cloth to become part of our franchise family.



## Why Temmerman's Partnership?

- **Rich Heritage:** Our family history spans generations, ensuring the quality and craftsmanship that only time can refine.
- **Modern Vision:** We're not just rooted in the past; we look to the future with an innovative perspective, adapting to changing times.
- **Artisanal Craftsmanship:** We pride ourselves on handcrafting exquisite candies and confections using traditional Belgian recipes, ensuring premium quality and taste.
- **Diverse Product Range:** Our extensive range includes chocolates, pralines, truffles, caramels, and more, offering something for every palate.
- **Honouring Tradition:** While we embrace the future, we never forget our traditional values and the importance of maintaining them.



# TEMMERMAN PARTNER



## Are You Temmerman Material?

### Take the Test!

Are you passionate about preserving traditions while embracing innovation? Do you have a sweet tooth for success? If you believe in the power of quality, heritage, and endless possibilities, you might be cut from the same cloth as Temmerman.



## The Temmerman Partner Test

Answer these questions to discover if you're the perfect fit:

- Do you value heritage and tradition in your business ventures?
- Are you open to modern ideas and innovation?
- Do you have a sweet tooth for success and quality?
- Are you ready for endless possibilities in the confectionery industry?

If you answered 'yes' to these questions, you're not just cut from the right cloth; you're woven into the very fabric of Temmerman's future.

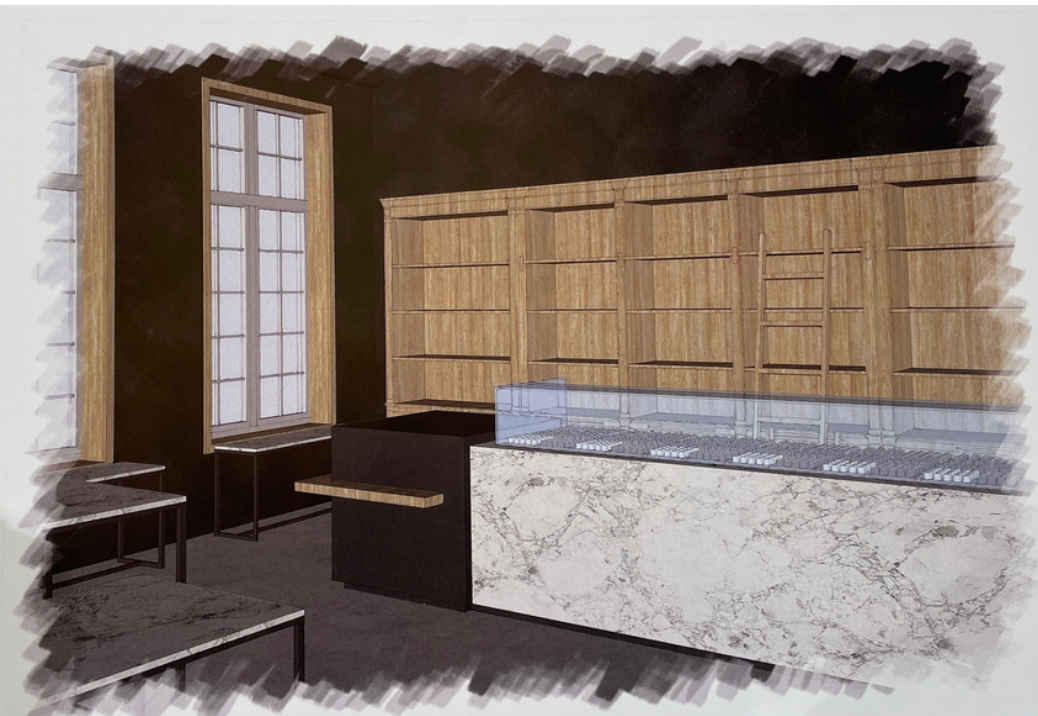
**Start your legacy with Temmerman's patnership today!**

# TEMMERMAN PARTNER



## Choose your Temmerman path

- **Le Petit T:** Our exquisite products, your brand.
- **Corner in a Shop:** A candy corner in your store, hotel or restaurant, attracting sweet-toothed customers.
- **Full-Size Shop:** Open your very own Temmerman Confiserie store, indulging your community in an array of mouthwatering sweets.
- **Temmerman Tea room:** Combine the advantages of a full size store with the opportunities of a high end tea room
- **Exclusive Ambassador Partners:** Enjoy the privileges of exclusivity in your region, becoming the sole ambassador of our brand.
- **Others:** different ideas? Let us know!





## Unlock the Power of Customization

At Temmerman, we understand that every customer and every market is unique, and their needs can vary significantly. We also believe in building strong, long-lasting relationships with our ambassadors through value-driven, efficient collaboration. So that's why we don't charge a standard franchising fee for elements you might not need? We've designed a flexible system with diverse options and modules tailored to your specific requirements.

## Our Tailored Modules

From shop design and exclusivity to webshops and personalised packaging, you'll discover a range of options below. We're committed to providing you with a customised experience, ensuring that your dream candy shop becomes a reality.

Features	Le Petit T	Corner	Full	Ambassador
Products	✓	✓	✓	✓
Neutral packaging	✓	✓	✓	✓
Brand Packaging	✗	✓	✓	✓
Support	✓	✓	✓	✓
Online shop	✗	✗	✗	✓
Annual Fee	✗	✗	✓	✓
Purchase discount*	✗	✗	✓	✓
Exclusivity	✗	✗	✗	✓

# TEMMERMAN PARTNER



## Explore Your Options

Explore our most common franchise modules:

- Shop Design: Tailor your store
- Exclusivity: Secure your territory and be the sole ambassador in your region.
- Webshops: Reach customers beyond your physical store with an online presence.
- Personalized Packaging: Create a unique, branded experience for your customers.
- Training



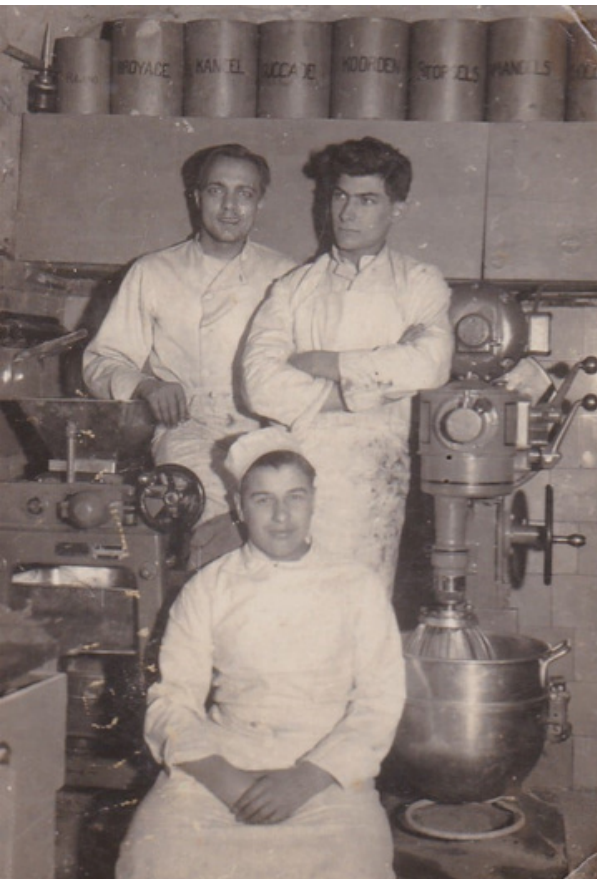
## Tailor-Made Solutions

We understand that your needs may not fit neatly into predefined modules. That's why we're committed to working closely with you, sharing all the details, and crafting a personalized plan that aligns perfectly with your dream of opening a successful candy shop.

We gladly help you with the design and or concept of you're shop will guide you through the path towards your dream business.

## Introducing Our Freshness Guarantee

At Temmerman we hold the belief that freshness is a cornerstone in delivering top-quality products. That's why we've embraced a produce-to-order mentality, ensuring that every item we create begins its journey the moment you place your order. It may require a bit more patience on your part, but the result is always worth the wait: products that are incredibly fresh with an extended shelf life.



## The Produce-to-Order Advantage

- **Freshness at Its Best:**

With our produce-to-order approach, you can expect nothing but the freshest, most delectable items.

- **Extended Shelf Life:**

Enjoy and sell your products for longer, thanks to our commitment to freshness the shelf life of our products varies from 6 weeks to 2 years

## A Universal Delight

The inclusivity of our products is a matter of pride. With most of our offerings being gelatine and alcohol-free, we cater to diverse beliefs and religions, ensuring everyone can indulge in the delectable flavors we create.



## FAQ

### **How long do I have to wait for my products?**

We produce to order, instead of ship to order, to provide you with freshly produced products you have to calculate 2 week of production time

### **How long is the shelf life?**

Depending of the product however as we produce on order most of our products out of the range have a shelf life between 6 months and 2 years

### **Which Incoterms do you apply?**

We sell ex works from our warehouse in Belgium

### **Can I sell other products?**

Yes we believe that you may in mutual agreement

### **Can I sell other brands?**

depending of your kind of partnership

### **Do I have to pay to become a partner?**

No we don't ask for a franchising startup fee, however for some types of partnership we do charge a set up fee

### **Can I receive exclusivity?**

Depending of the type of partnership

### **Do you have a BIO, Halal, kosher label?**

No we don't, we believe in our products rather than labels

### **Can I personalise my packaging?**

Yes with mutual agreement,



## **Your Sweet Journey Begins Today!**

**Are you ready to merge age-old traditions with a fresh vision of success?**

**Whether you're looking for a private label collaboration, a corner in an existing shop, a tea room, a full-size shop of your own, or exclusive ambassador status, Temmerman Confiserie offers endless opportunities to satisfy your craving for success.**

### **Contact Us:**

**Email: [partnership@temmermanconfiserie.com](mailto:partnership@temmermanconfiserie.com)**

**Join us in spreading the joy of candies and confections, one delightful treat at a time!**

**[www.temmermanconfiserie.com](http://www.temmermanconfiserie.com)**